

PLANETARY STOCK TRADING: FIRST TRADE CHARTS

UAC 2012

By Bill Meridian

billmeridian.com

To obtain this handout in PDF format, go to billmeridian.com/UAC2012stocks.pdf

The lecture in in 4 parts:

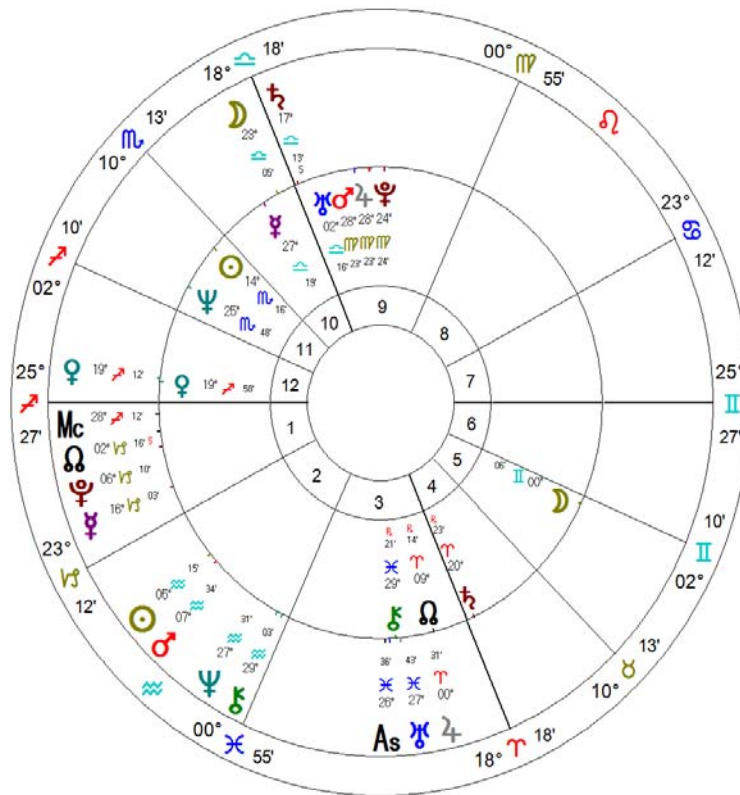
- INTRODUCTION
- THE EARNINGS SURPRISE METHOD
- INDUSTRY ANALYSIS
- THE JUPITER METHOD

Part 1-INTRODUCTION

We begin with a **Quiz**:

1. What kind of announcement did this person make on the date of the transits? What was the effect on his reputation or public image?

Inner Wheel
MR. CARPENTER
Natal Chart
Nov 6 1968, Wed
10:00 am EST +5:00
NYC, NEW YORK
40°N43' 074°W00'
Geocentric
Tropical
Koch
True Node



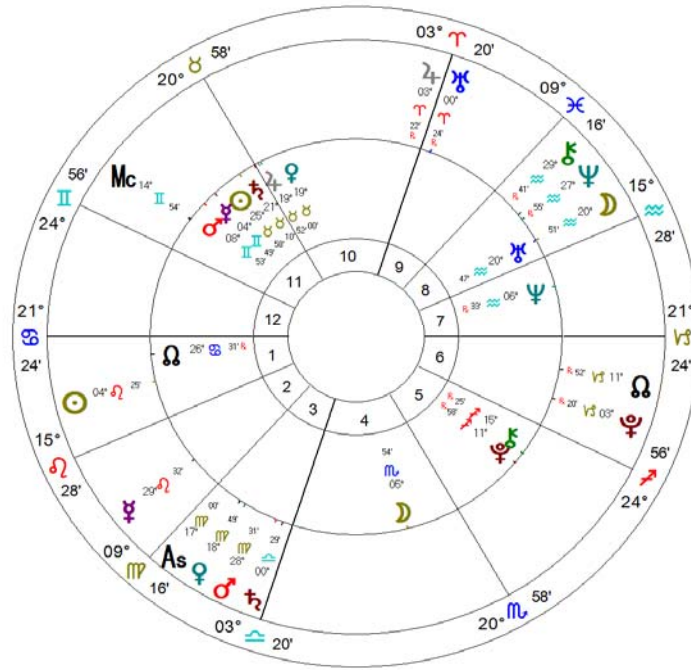
Outer Wheel
TRANSIT
Event Chart
Jan 25 2011, Tue
9:30 am EST +5:00
NYC, NEW YORK
40°N43' 074°W00'
Geocentric
Tropical
Koch
True Node

Note position of transiting Saturn.

2. What kind of announcement did this person make on the date of the transits? What was the effect on her reputation or public image?

Inner Wheel
BOY
 Natal Chart
 May 16 2000, Tue
 9:30 am EDT +4:00
 NYC, NEW YORK
 40°N43' 074°W00'
 Geocentric
 Tropical
 Koch
 True Node

Outer Wheel
Transits Jul 27 2010
 Event Chart
 Jul 27 2010, Tue
 9:30 am EDT +4:00
 NYC, NEW YORK
 40°N43' 074°W00'
 Geocentric
 Tropical
 Koch
 True Node

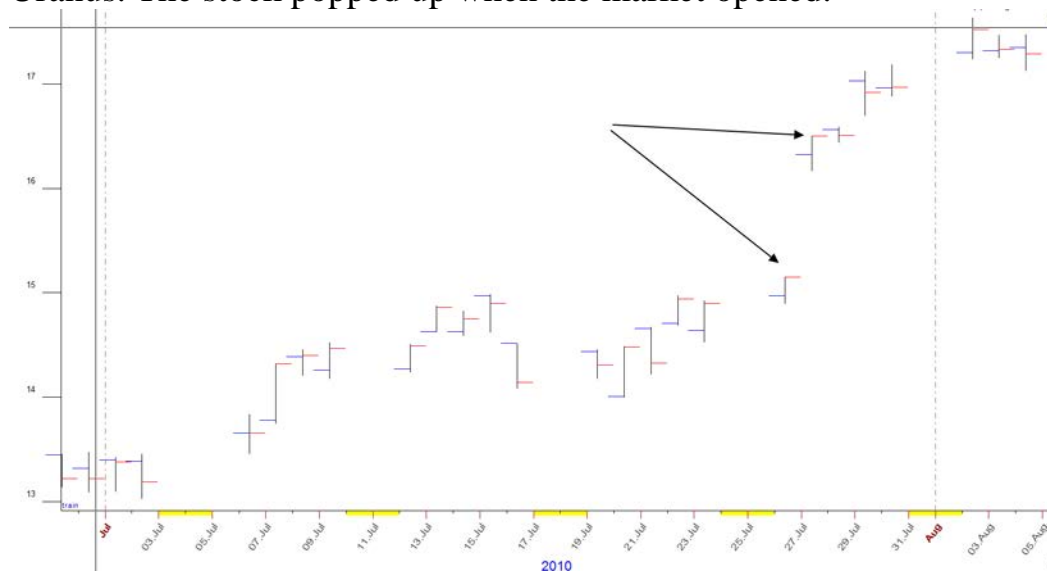


Note positions of transiting Jupiter and Uranus.

3. Chart 1 was the chart of first trade of Carpenter Technology. CRS reported earnings on January 25, 2011 with Saturn transiting on the natal MC. There were some offsetting soft aspects, but Saturn was making a station and was thus at its slowest and most powerful. The net result was a 10% drop by mid-day, but then the shares rallied back and closed down by only 0.4.



4. Chart 2 was the first trade chart of UBS. UBS reported earnings before the market opened on July 27th. Note the planets on the natal MC: Jupiter and Uranus. The stock popped up when the market opened.



Part 2: THE EARNINGS SURPRISE METHOD

Earnings Surprise Method General Rules:

1. Look for the most powerful axis in space at earnings reporting time. Examples:
 - Saturn opposite Uranus in 2008
 - Saturn opposite Pluto in 2001
 - 1997: Jupiter, Uranus, Neptune all stationed from Oct. 8 to 14.
 - 1994 stationary Uranus was 45 degrees to stationary Saturn.
2. See how this axis hits the charts at the time of an announcement. Most US companies announce earnings on a calendar-year basis: January, April, July, and October. Quantitative studies have shown that stocks get most volatile during these months.
3. EPS announcement dates are obtained at Yahoo Finance-Investing-Stocks-Earnings Dates and from Rightline (<http://www.rightline.net/calendar/index.html>). See attached example.

EARNINGS CALENDAR - REPORTS TO BE ANNOUNCED WEEK OF APR 15 - APR 21

Continental Matls Corp	CUO	04/16	D	n/a	n/a
Dgse Companies Inc	DGSE	04/16	D	n/a	n/a
Marquee Energy Ltd	MQL.V	04/16	D	n/a	n/a
Platinum Underwriter H1	PTP	04/16	D	1.14	-4.16
Seven Arts Entmt Inc	SAPXD	04/16	D	n/a	n/a
Titan Machy Inc	TITN	04/16	D	0.52	0.57
Triangle Pete Corp	TPLM	04/16	D	-0.03	-0.24
Wuhan General Grp China	WUHN	04/16	D	n/a	n/a
Lee Enterprises Inc	LEE	04/17	B	n/a	n/a
Cree Inc	CREE	04/17	D	0.21	0.27
Stryker Corp	SYK	04/17	D	0.99	0.90
Union Pac Corp	UNP	04/17	D	1.64	1.29
Wells Fargo & Co New	WFC	04/17	D	0.72	0.67
Pick N Pay Stores Ltd	PIK.J	04/18	B	n/a	n/a
Piper Jaffray Cos	PJC	04/18	D	0.40	0.38
Qualcomm Inc	QCOM	04/18	D	0.88	0.86
F5 Networks Inc	FFIV	04/18	A	1.07	0.88
Wesco Intl Inc	WCC	04/19	B	0.91	0.74
Du Pont E I De Nemours	DD	04/19	D	1.63	1.52
Life Time Fitness Inc	LTM	04/19	D	0.61	0.51
Peoples United Financia	PBCTD	04/19	D	0.19	0.15
Southwest Aircls Co	LUV	04/19	D	0.05	0.03
Verizon Communications	VZ	04/19	D	0.60	0.51
Valmont Inds Inc	VMI	04/19	A	1.38	0.97
Allegheny Technologies	ATI	04/20	D	0.71	0.59
Kimberly Clark Corp	KMB	04/20	D	1.18	1.09

4. Select those that receive hits to the MC, Sun, Moon or Asc. within 1-2 degrees. Major axes containing 5-6 planets are also effective. The more, the merrier. Applying aspects are always stronger than separating aspects.
5. Take this group and see how the progressed charts, direct and converse, are hit. Hits to the MC are best; the Moon & Sun are no. 2. This makes sense if one considers the first-trade chart to be a mundane horoscope. The Moon in such a chart represents the public. The Midheaven, as always, describes the “reputation” or public view of the stock. If the MC is very afflicted at the time of an earnings announcement, then the report will not be well-received, and the stock will decline. Note that the report itself may not be bad in the sense that the numbers may not be unfavorable, but the reaction to the numbers will be bearish.
6. Those that receive the most hits are likely to move the most.
7. I recommend selecting about 10 very liquid stocks that have options. Avoid those that make hard aspects to your horoscope.
8. You will note that stocks in the same industry have shared degree areas- zodiacal degrees around which planets cluster.
9. It is best to know about the technical chart patterns. Thomas Bulkowski’s book, Encyclopedia of Chart Patterns is recommended.
10. The stock’s relative strength is frequently a signal to the subsequent direction. This is the stock price divided by the appropriate index, such as the S&P 500.
11. Parallels and contraparallels are stronger than conjunctions and oppositions. Jupiter parallel the Sun of CSCO in the autumn of 2003 on the very day of the EPS announcement corresponded with a rise of more than 5% on that day. In general, price moves about 25% more if a hit is from a parallel rather than a conjunction. Declination is powerful.
12. Use Johndro’s concept of time orb. If there is a very close aspect, it dominates all others in that time period.
13. The importance of the 24th Harmonic- in 2004, I collected all of the horoscopes of stocks that made big moves. Most of these were on the downside. It was apparent that many, like KO, had planets in early degrees of cardinal signs. Intel, with the ascendant at 2 Libra and the MC at 2 Cancer, was hit as was KO. Many of these charts would have been missed if the researcher did not use the 75, 105, and 165 degree aspects.
14. If you are engaging in risky options trading, you generally want to close the position in 3 days. Most of the appreciation in the options occurs in day 1, usually 66%. Closing it within a day is best. Make sure the options market is liquid.
15. The 100%/85% rule: If you are 100% certain, you are probably wrong. If you are 85% certain, you have a healthy degree of doubt.
16. A quantitative analyst once calculated that the odds of buying any stock that increases in price are three-to-one in the investors favor if one is buying in a bull market. In a bear market, the odds are against the investor by twenty-to-one. These odds were determined for the overall market, but we must keep in mind that there are about 90 industry groups in the US that move in their own trends. In 1994, for example, the S&P barely rose while the semiconductor group was up by 27 percent and the homebuilding group fell by 40 percent. Stocks of a feather flock together-if

one has a choice of a bullish horoscope in a bullish group, select that one over a bullish chart in a bearish group.

17. B.F. King's 1964 PhD dissertation at the U. of Chicago demonstrated that about 70% of all of a stock's movement is caused by the overall market, about 20% is caused by the industry group, and about 10% actually derives from the company itself. When looking at a 1st trade chart, keep in mind that one is looking at about 30% or less of the picture.

First Trade Charts

These horoscopes are set up for the date that an issue was listed on a given exchange. The time is that of the opening of trading for the exchange for that day. The New York Stock Exchange (NYSE) and the smaller bourses began trading at 10 am until September 30, 1985. Starting on that date, trading began at 9:30 am. Subsequent horoscopes are set for this earlier time. The center for Wall Street action is the Big Apple, so all charts are set for New York City.

Dates can now be obtained at NYSE.COM, but check the date versus another source such as Bloomberg or some trading platform to be certain. Older dates are a bit dodgy because the NYSE let a group of temps load the original data in. Thus, the IBM date on their site was the 1915 date (the stock of the prior company) and not the 1924 date. One can update data by referring to Barrons Market Lab each week. See the attached example.

I found a quote from George Bayer dating back 60 years that supports this view:

"If listed on an exchange, erect it for the first day of listing on the exchange. In case a stock first listed on the Curb or some other Exchange, and later transferred to the Big Board, make a new horoscope for the Big Board and forget about the old listing. That horoscope died out with the transfer. The time used is 10 am, standard or daylight time as the case may be. Do not watch for the exact time of the first trade. It might occur at 10:10, 12:15, even the next day, but due to the fact that no important aspect occurred previously that would have caused a trade, the stock simply did not sell. However, it could have been traded at 10 am, if one wanted to trade in it. This is important to recognize."

A bit of explanation about the history of a company and its shares will be helpful in understanding this concept. First, a business opens its doors. Then, if it has not already, it incorporates. If shares are sold to the public, the sale takes place through an underwriter. The underwriter lines up buyers and then sells stock on the initial public offering (IPO) date. This puts a supply of stock in public and institutional hands. About 5 business days later, the stock opens trading. A major new issue of a leading company may be listed directly on the NYSE, as Readers Digest was on February 15, 1990. The two dates, IPO and first listing, occur close together. I have found the first trade date to be the more important of the two. Customarily, the chairman or president of the company will go to the floor of the exchange and make a token, personal purchase of 100 or 1,000 shares to kick off the trading. In the words of a NYSE official, trading begins "almost immediately." Thus, the choice of the 9:30 or 10:00 am time for the charts is supported by fact.

GOOG'S FALL

On April 16, 2011, GOOG reported an earnings disappointment. The stock fell by 48 points or 8%. Pluto had stationed at 7 Capricorn 30 on the 9th. This was close enough to an opposition to the 6 Cancer MC. Saturn squared the progressed MC exactly on the 20th.

Google



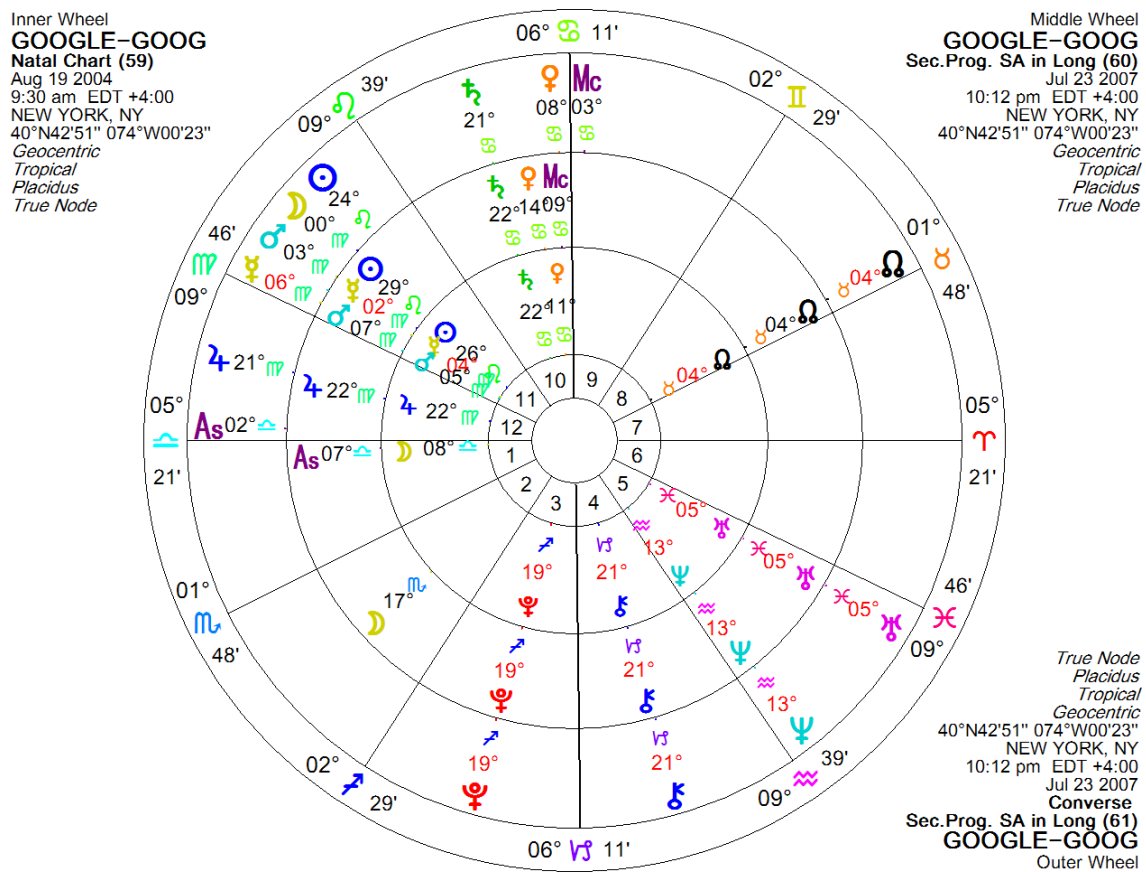
Google is a good example of an active stock that moves when the chart is transited. In 2010, Pluto began to oppose the MC of the stock at 6 Cancer. The price graph shows the big declines when the company reported EPS in April and in July.



On July 20, 2007 Google (GOOG- August 19, 2004) fell more than 28 points, almost 20%, when earnings did not meet expectations. We find that:

- Saturn was going to be exactly conjunct the Sun on August 8
- Saturn was semisquare the progressed MC on July 15
- Saturn was conjunct the converse progressed Sun on July 16
- Neptune was 135 degrees to the natal MC on July 23
- The Uranus station on June 23rd had been 105 degrees to the converse progressed MC.

The trine of transiting Pluto to the natal Sun on July 19th was insufficient to offset the weight of these heavy hits.

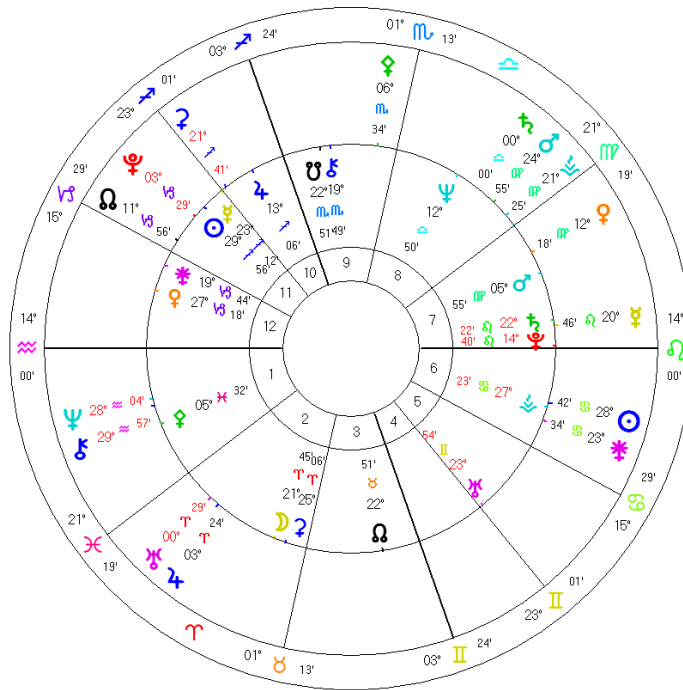


Textron

Textron (TXT- 12/22/47 at 10am) reported on July 21, 2010 with Jupiter trine the MC. The planet was going retrograde 2 days later. Note that the orb is zero in both degrees and minutes. It does not get closer than this.

Inner Wheel
TEXTRON-TXT
 Natal Chart (24)
 Dec 22 1947
 10:00 am EST+5:00
 NYC
 40°N45' 073"W67'
*Geocentric
 Tropical
 Koch
 True Node*

Outer Wheel
Transits Jul 21 2010
 Event Chart (25)
 Jul 21 2010
 9:30 am EDT+4:00
 New York, NEW YORK
 40°N42'51" 074°W00'23"
*Geocentric
 Tropical
 Koch
 True Node*

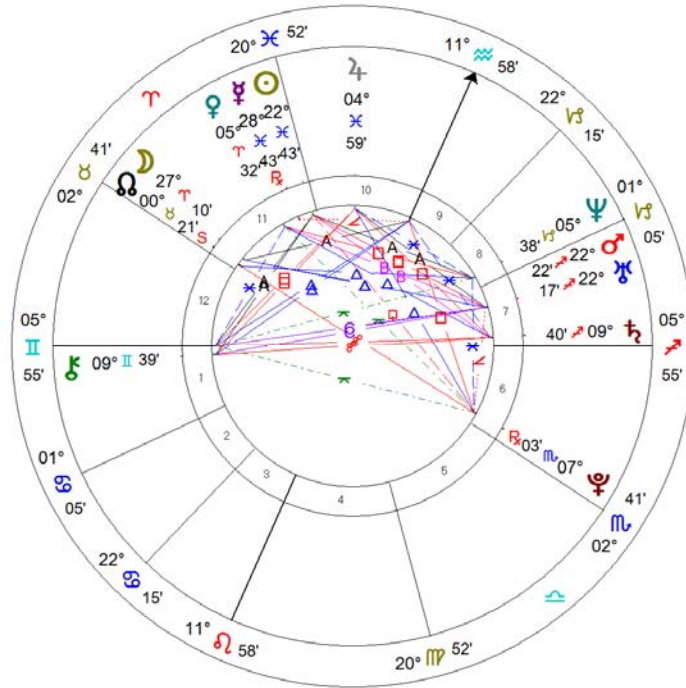


Next, we will look at a series of such contacts:

Microsoft's Midheaven

Microsoft began trading with the MC at 11 Aquarius. Simply by watching the transits to the MC, I was able to get a good idea of the stock's behavior.

MICROSOFT-MSFT
Natal Chart
 Mar 13 1986, Thu
 9:30 am EST +5:00
 NYC
 40°N43' 074°W00'
 Geocentric
 Tropical
 Koch
 True Node

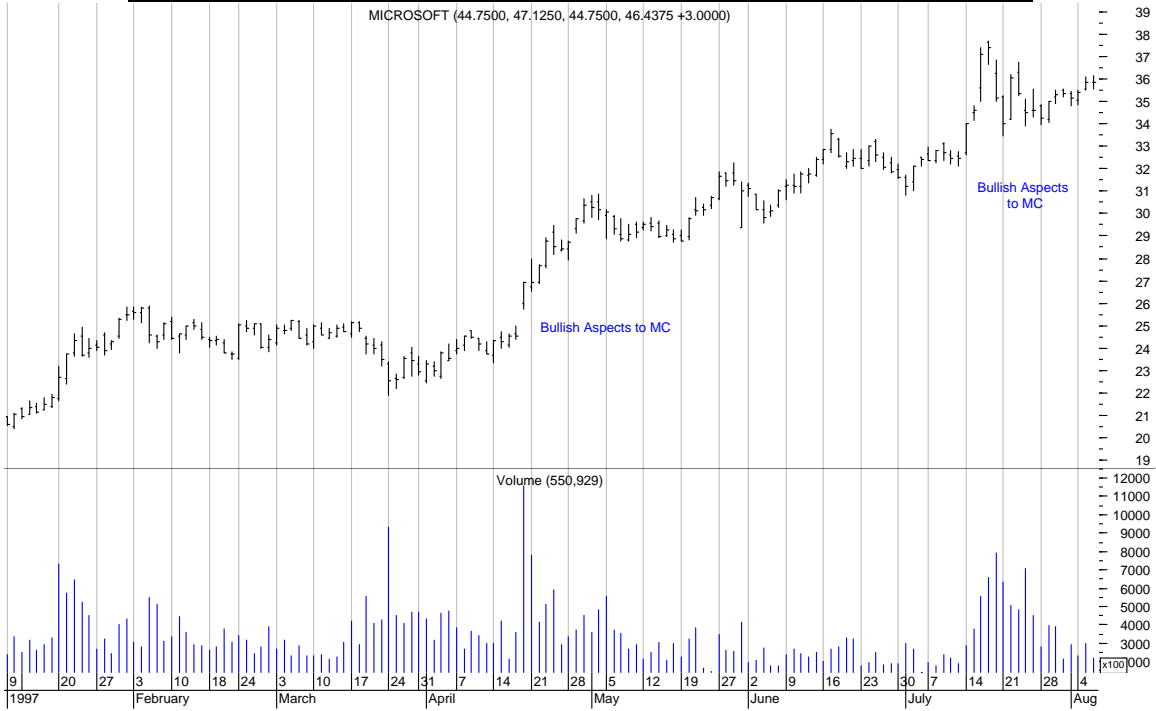


Beginning in 1997, Jupiter and Uranus moved back and forth over the MC at 11 Aquarius. Each earnings report produced a positive and unexpected surprise. The share price jumped in almost every quarter. The following transit report of Jupiter and Uranus to the natal MC tells the story:

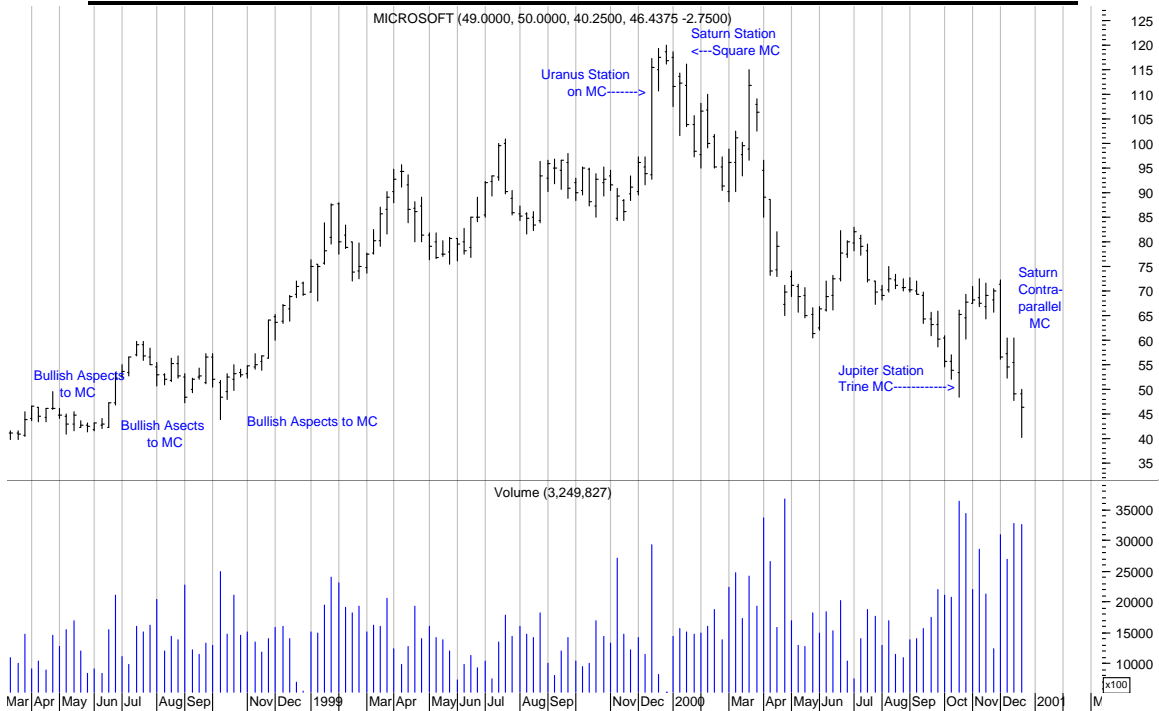
Jup	Cnj	MC	Mar 16 1997	11°Aq58' D	11°Aq58' D
Jup	Pll	MC	Mar 24 1997	-17°12' -17°12'	
Ura	Retrograde		May 13 1997	08°Aq40' R	
Jup	Retrograde		Jun 10 1997	21°Aq55' R	
Jup	Pll	MC	Aug 23 1997	-17°12' -17°12'	
Jup	Direct		Oct 8 1997	12°Aq07' D	
Ura	Direct		Oct 14 1997	04°Aq44' D	
Jup	Pll	MC	Nov 20 1997	-17°12' -17°12'	
Ura	Cnj	MC	Apr 3 1998	11°Aq58' D	11°Aq58' D
Ura	Retrograde	May 17 1998	12°Aq44' R		
Ura	Cnj	MC	Jul 2 1998	11°Aq58' R	11°Aq58' D
Jup	Retrograde		Jul 18 1998	28°Pi03' R	
Ura	Direct		Oct 18 1998	08°Aq49' D	
Jup	Direct		Nov 13 1998	18°Pi10' D	
Ura	Cnj	MC	Jan 19 1999	11°Aq58' D	11°Aq58' D
Ura	Pll	MC	Feb 25 1999	-17°12' -17°12'	
Ura	Retrograde		May 21 1999	16°Aq48' R	

Ura	Pll	MC	Aug 19 1999	-17°12'	-17°12'
Jup	Retrograde		Aug 25 1999	04°Ta58' R	
Ura	Direct		Oct 23 1999	12°Aq52' D	
Ura	Pll	MC	Dec 19 1999	-17°12'	-17°12'

EFFECT OF MC CONTACTS ON MSFT SHARES-1997



EFFECT OF MC CONTACTS ON MSFT SHARES-1999-2000



The first graph is a daily chart of 1997 demonstrating how Jupiter, Uranus and their midpoint energized the MSFT MC in each quarter, sending the shares up. The second graph shows the last positive contact, a Uranus station in October of 1999 which was separating from the MC. Again, the stock popped up. But here is where the bullish run of MC hits ran out and the storm clouds rolled in. The January Saturn station was square the MC. In the absence of any offsetting positive aspects, the shares sank. Note how MSFT fell until the last quarter of 2000 when the Jupiter station at 10 Gemini trined the MC. The rally was short-lived as Saturn came in to contra-parallel the MC.

Test of Tech Share Price Movement In The 60 Days Around The Transit Of Jupiter To The MC

Stocks= 30

Time Period= 26 years

Average annual price appreciation= 22.5%

In the 12 days prior to Jupiter conjoining the MC, until 2 days after= 12.4% in 14 days

Occurred= 76% of the time

Declination-To demonstrate the power of declination, we will look at the natal first-trade chart of IBM. Note that natal Uranus is at 16 Pisces in close aspect to Mars and Jupiter at 16 Pisces and the Moon at 14 Gemini. A test of lunar transits over natal Uranus was run over an 8-year period. If one simply bought and held IBM for 8 years, the return would have been 4.5% annually. If one bought IBM shares in the week before the Moon conjoined natal Uranus and sold on the day after the conjunction, the annual gain would have been 14.5%. However, by flipping the switch to declination, the annual gain rises to 16.5%. Thus, we can see the value added by declination.

THIRD QUARTER 2006

COSTCO

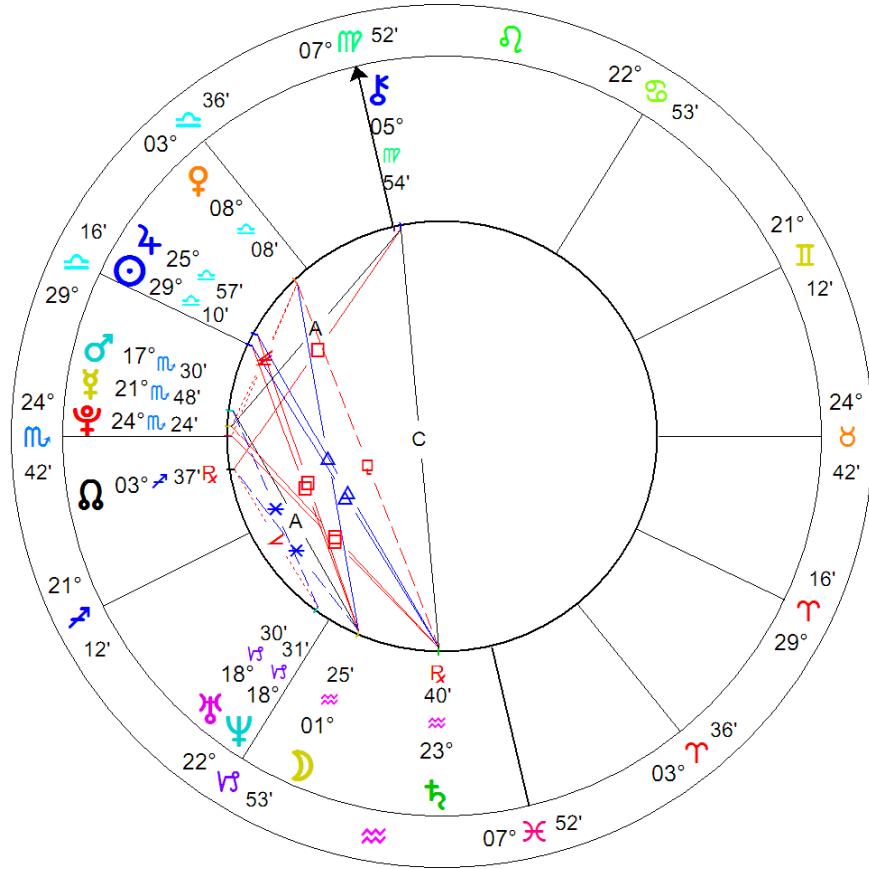
Jupiter was exactly sextile the progressed MC on October 12, the day of the earnings release. Jupiter was also conjunct Mercury on the 17th, and was heading for the natal Pluto-ascendant conjunction at the end of the month. There was an upcoming new Moon on the 22nd at 29 Libra on the natal Sun-Jupiter conjunction. On the day of the lunation, there was a Mercury-Jupiter conjunction at 23 Scorpio near the natal Mercury-Pluto-ascendant conjunction. Transiting Pluto was very close to a trine to the converse progressed (CP) MC; it was exact on the 1st. The November 29 Neptune station was trine the CP Sun within 48 minutes of arc.

COST jumped about \$4. The call options began the 11th trading at 1.00 and rose to 1.25 by the end of the day. The earnings exceeded expectations and the calls rose to a high of 4.20 on the 12th, before settling at about 3.80 at the close. I sold the calls at the close of the day of the announcement. Note how the stock did not exceed that high in the days following. The calls drifted down to the \$3 area. Thus, selling on the day of the announcement maximized the gain.

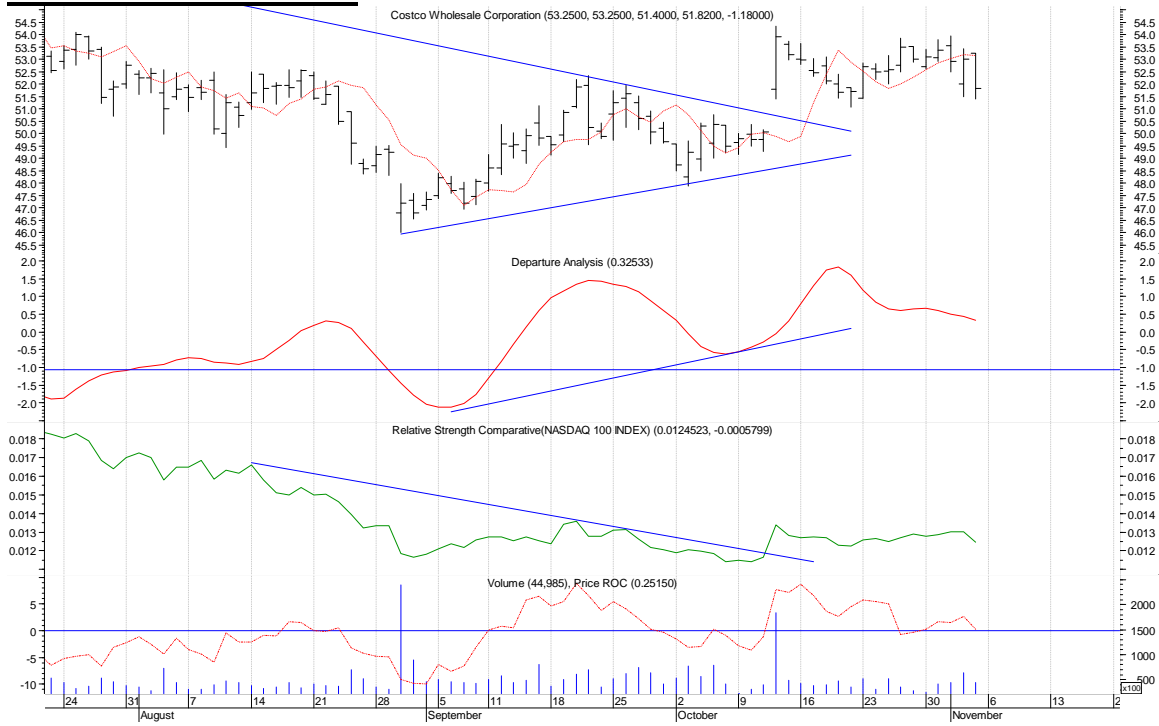
This example is important for three reasons:

- It demonstrates the importance of an exact hit to the MC, the progressed MC in this case, on the day of an EPS announcement.
- It shows the importance of taking the position on the close on the day before the announcement, followed by the sale on the day of the announcement. Most of the appreciation in the options will occur in the day of the announcement.
- The technicals indications supported the positive planetary indications. Note that the momentum oscillator in the second strip shows higher lows. In addition, note that the relative strength versus the NASDAQ 100 broke its downtrend line on the day before the announcement. Also note that the share price was in a triangle, approaching the apex. The stock was due to move one way or the other.

COSTCO-COST
 Natal Chart (20)
 Oct 22 1993
 9:30 am EDT +4:00
 NEW YORK
 40°N45' 073°W57'
 Geocentric
 Tropical
 Koch
 True Node



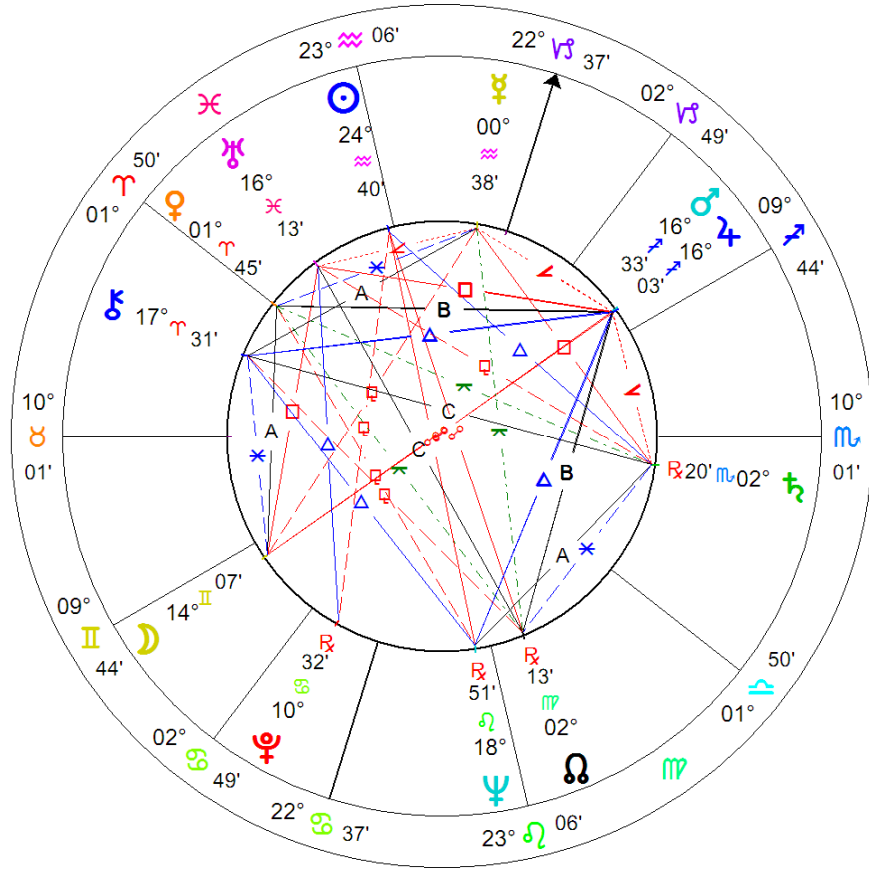
COSTCO Breaks Out



IBM'S EPS SURPRISE

IBM jumped on the same day. Jupiter was sextile the Mc on the 21st, and Pluto was sextile the Sun on the next day. Uranus, slowing into its November 20 station, was trine Pluto and sextile the ascendant. The October lunations were conjunct the progressed and CP Midheavens.

IBM-IBM
Natal Chart (27)
 Feb 14 1924
 10:00 am EST +5:00
 NYC
 40°N45' 073°W57'
Geocentric
Tropical
Koch
True Node



Big Blue Jumps

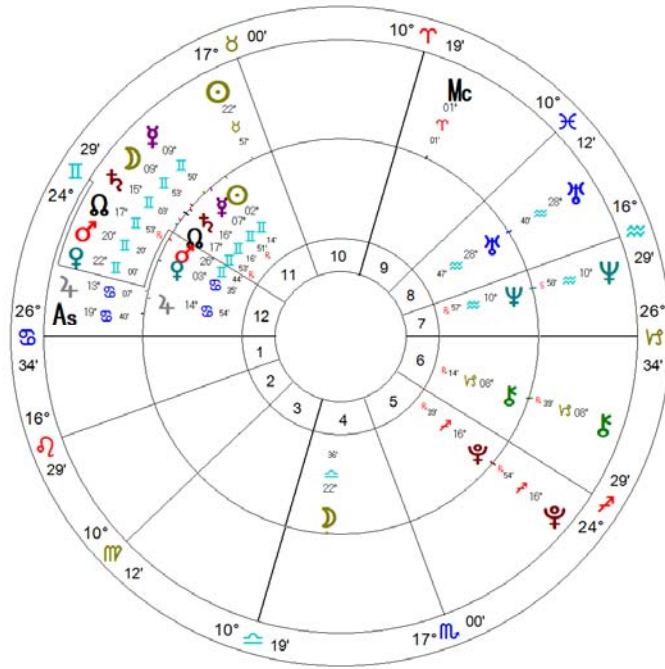


NETFLIX

NFLX reported an earnings surprise on January 27, 2011. Note that Jupiter was transiting over the converse progressed MC in the outer wheel.

Inner Wheel
NETFLIX-NFLX
 Natal Chart
 May 23 2002, Thu
 9:30 am EDT +4:00
 New York, NEW YORK
 40°N42'51" 074°W00'23"
 Geocentric
 Tropical
 Placidus
 True Node

Outer Wheel
NETFLIX-NFLX
 Sec.Prog. SA in Long
 Converse
 Jan 15 2012, Sun
 5:52 pm EDT +4:00
 New York, NEW YORK
 40°N42'51" 074°W00'23"
 Geocentric
 Tropical
 Placidus
 True Node

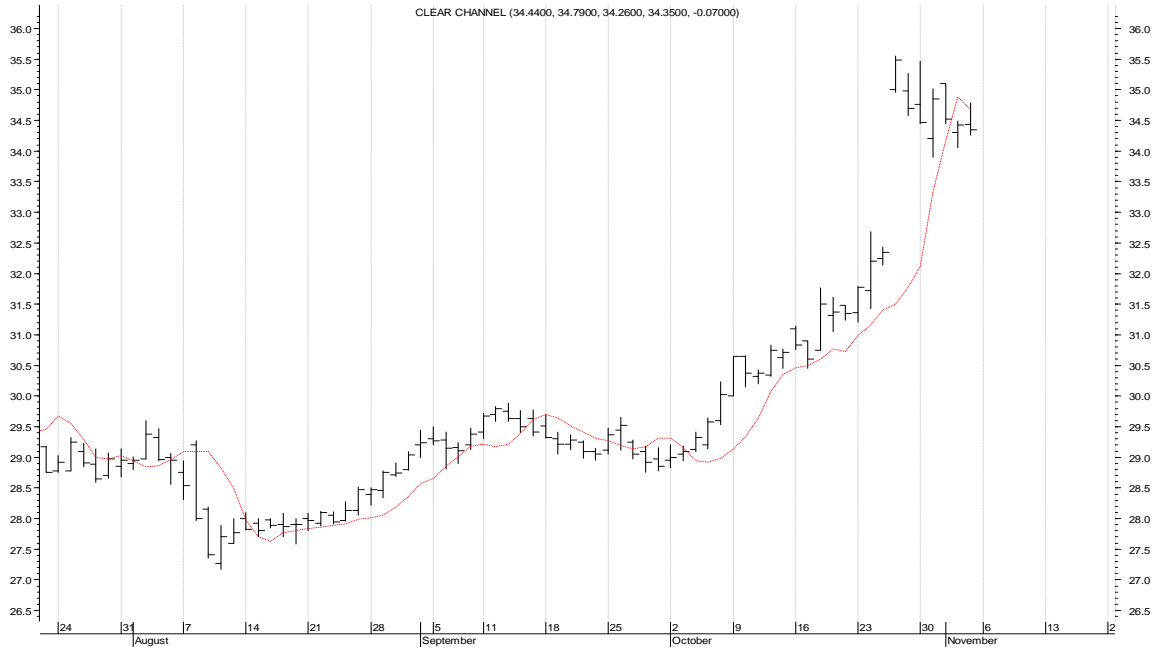
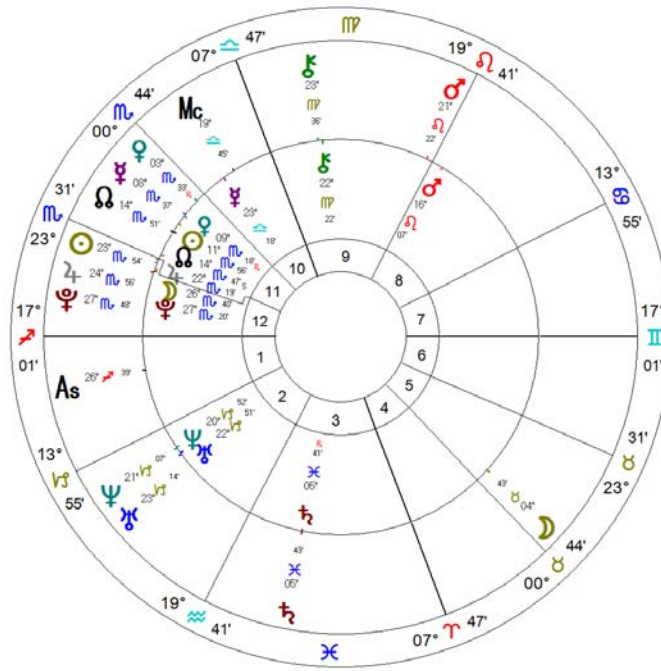


CLEAR CHANNEL

CCU was acquired in the autumn of 2006. Note that transiting Jupiter was on the progressed Sun-Jupiter conjunction at the time (from October 19 to November 6th there were conjunctions from Jupiter to natal Sun and the progressed conjunction). Compare this case to TCC, which follows.

Inner Wheel
CLEAR CHANNEL-CCU
 Natal Chart
 Nov 4 1994, Fri
 9:30 am EST +5:00
 NEW YORK
 40°N45' 073"W57"
 Geocentric
 Tropical
 Koch
 True Node

Outer Wheel
CLEAR CHANNEL-CCU
 Sec.Prog. SA in Long
 Oct 1 2006, Sun
 5:52 pm EST +5:00
 NEW YORK
 40°N45' 073"W57"
 Geocentric
 Tropical
 Koch
 True Node



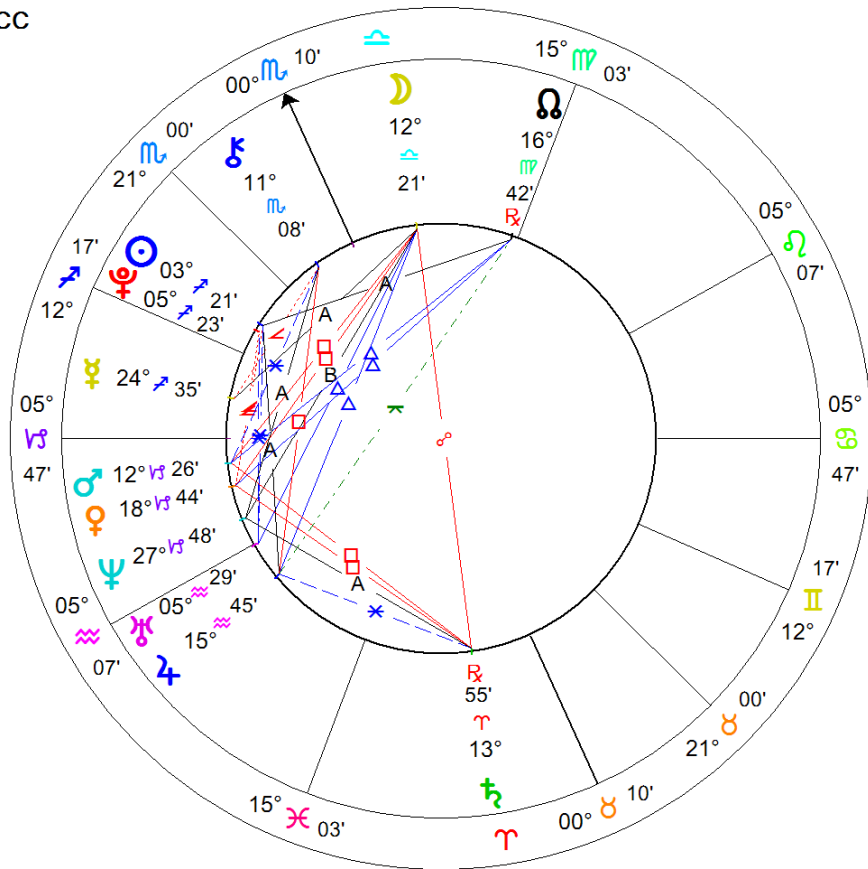
TRAMMEL CROW

TCC was bought out by CB Richard Ellis Group on October 31, 2006. Compare the converse progressed chart for TCC to the direct progressed chart for CCU. Note that Jupiter was transiting over the progressed Sun at 24 Scorpio in both cases.

Trammell Crow is Acquired



TRAMMEL CROW-TCC
Natal Chart (20)
 Nov 25 1997
 9:30 am EST +5:00
 NYC
 40°N43' 074°W00'
Geocentric
Tropical
Koch
True Node



TRAMMELL CROW-TCC

Sec.Prog. SA in Long (21)

Converse

Nov 6 2006

3:10 am EST +5:00

NYC

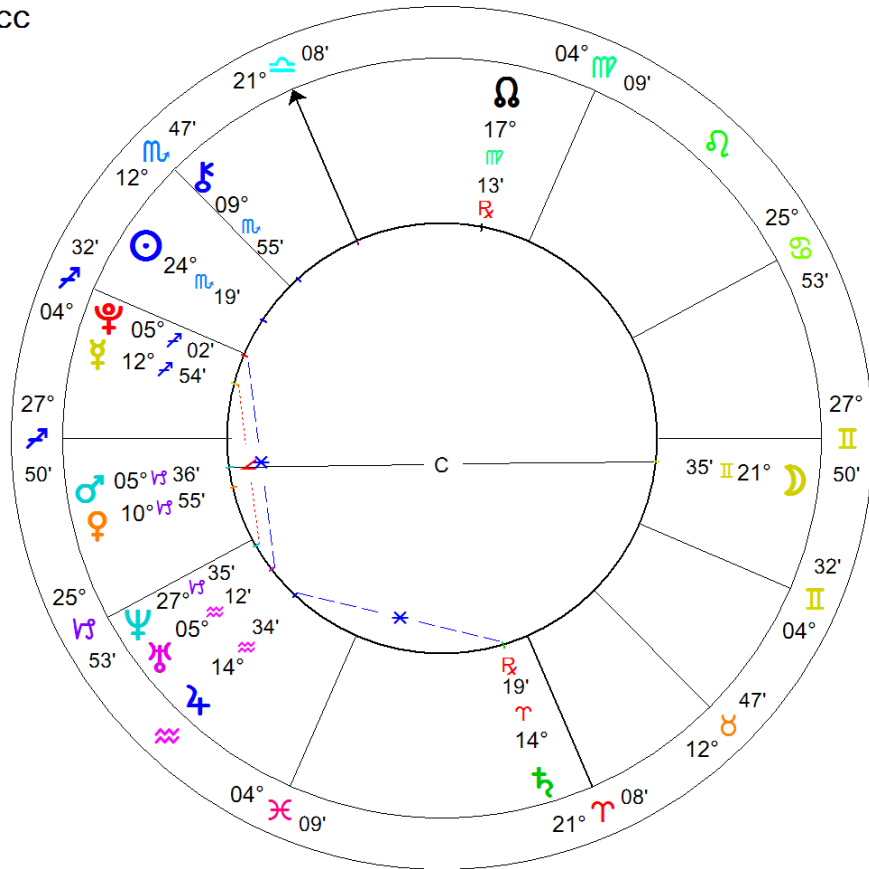
40°N43' 074°W00'

Geocentric

Tropical

Koch

True Node



SCANNING FOR THE JULY EPS REPORTING PERIOD

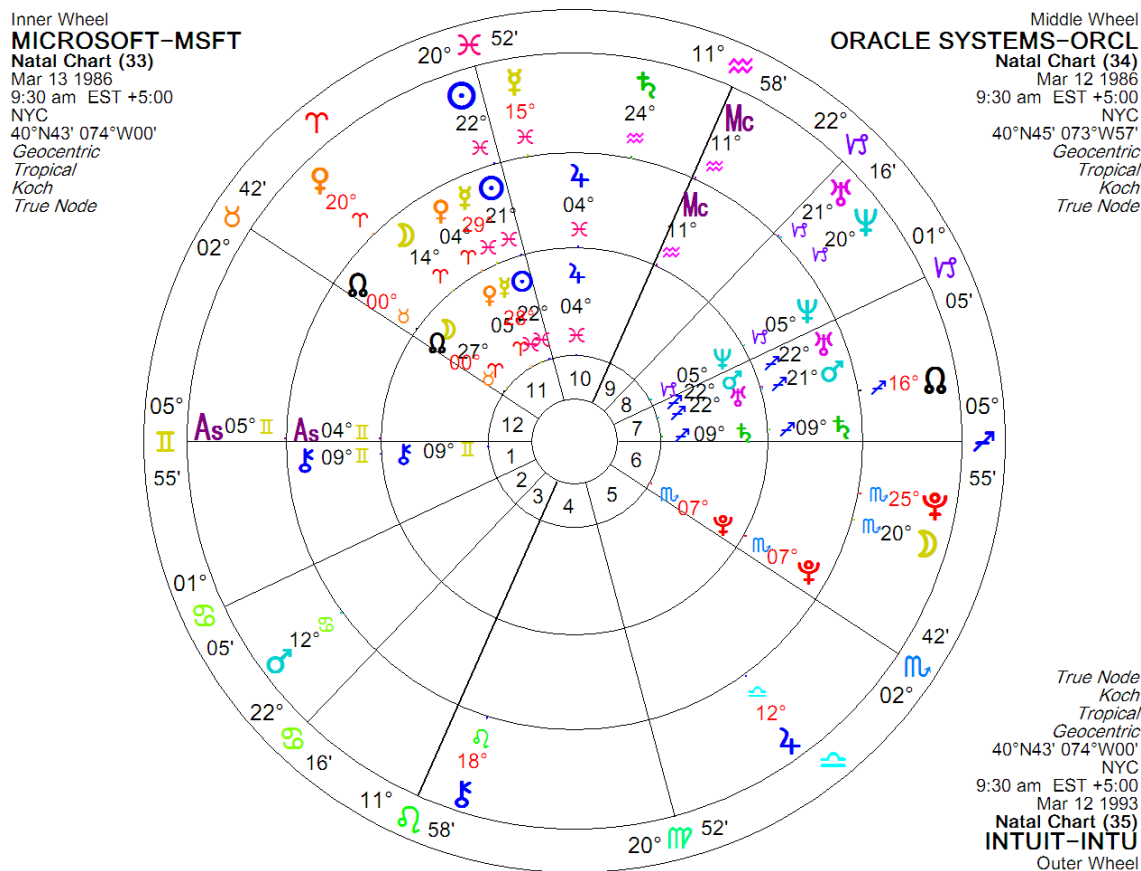
STOCK	DATE	GEMINI POINTS TRANSITED BY JUPITER IN JULY 2012
CMCSK	7/11/1972	MC
LLY	7/9/1970	MC
TOL	7/16/1986	MC
XRX	7/11/1972	MC
ARB*	3/14/2001	ASC-JUPITER

*ARB REPORTS NEAR JULY 19TH

PART 3: INDUSTRY FORECASTS

The Software Group

It is remarkable to note that software giants Microsoft, Oracle (ORCL), and Intuit (INTU) have both the midheaven and the Sun in approximately in the same degree. This is why most stocks within an industry move together. This leads to the next topic, industry group movements.



The movements of the three stocks do not necessarily match for a couple of reasons. First, ORCL does not release earnings on a calendar-year basis (January-April-July-October). Therefore, the aspects to the MC did not necessarily occur at the times of the earnings announcements. Second, there are predictive techniques that are horoscope-specific, such as progressions. In the MSFT chart, Uranus made a station by secondary progression in February of 2000 at 22 Sagittarius 22, only one minute from natal Mars and square the natal Sun. The government's assault against the company became a factor which weighed the shares down. Why own this stock when one could own another software stock that did not carry this risk? This powerful progression only occurred in the MSFT chart and not in the others.

The Computer Hardware Group

Let us look at the technology group as a second example. IBM, Microsoft, Compaq, and Oracle are leaders in their fields. The first-trade charts all have some very close and dynamic aspects as laid out below:

IBM (2/14/24): Mars= 16 Sag 33; Jupiter= 16 Sag 03; Uranus= 16 Pisces 14; Moon= 14 Gemini 07.

Microsoft (3/13/86): Sun= 22 Pisces 43; Mars= 22 Sag 23; Uranus= 22 Sag 17.

Compaq (12/10/85): Sun= 18 Sag 29; Uranus= 18 Sag 13.

Oracle (3/12/86): Sun= 21 Pisces 43; Mars= 21 Sag 50; Uranus= 22 Sag 16.
Lexmark (11/15/95): Venus= 15 Sag; Mars= 19 Sag; Jupiter= 19 Sag; Saturn= 18 Pisces

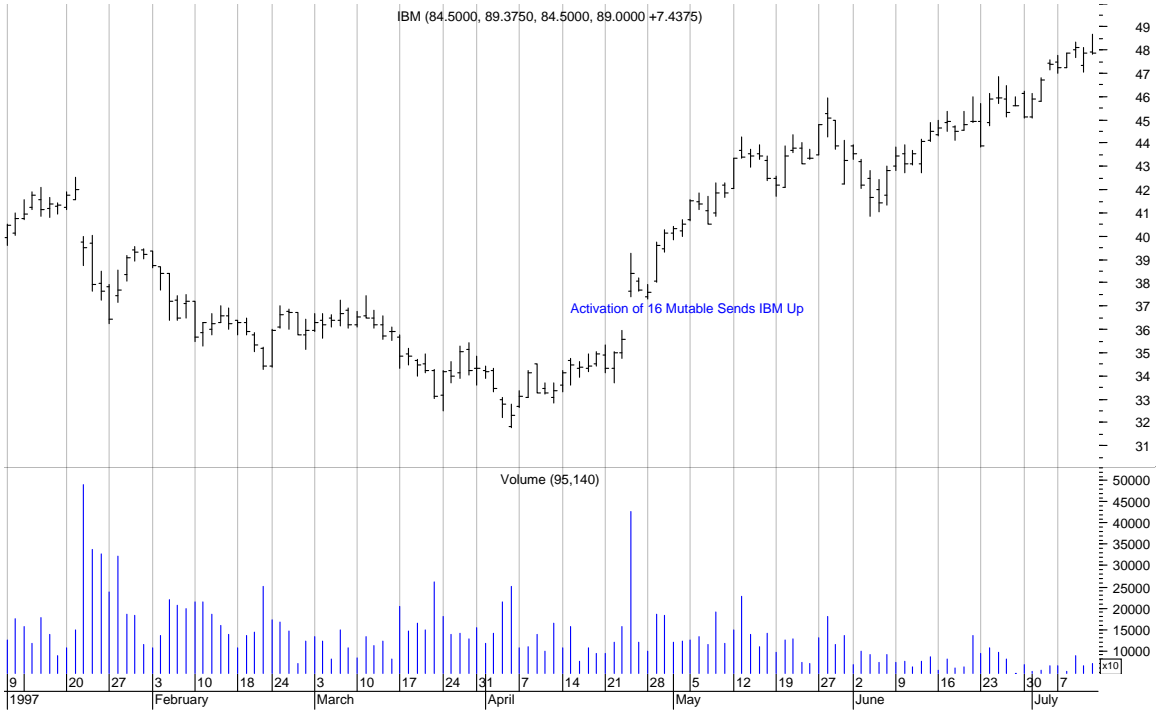
Computer Assoc. (9/11/86): Sun=18 Virgo 31; Uranus=18 Sag. 27; Moon= 21 Sag. 44; Jupiter= 17 Pisces 46

These stocks and the overall market topped with the solar eclipse of March 9, 1997 at 18 Pisces 31. The Mars station of April 27, 1997 at 16 Virgo 44 occurred as these stocks hit lows and suddenly jumped into new uptrends.

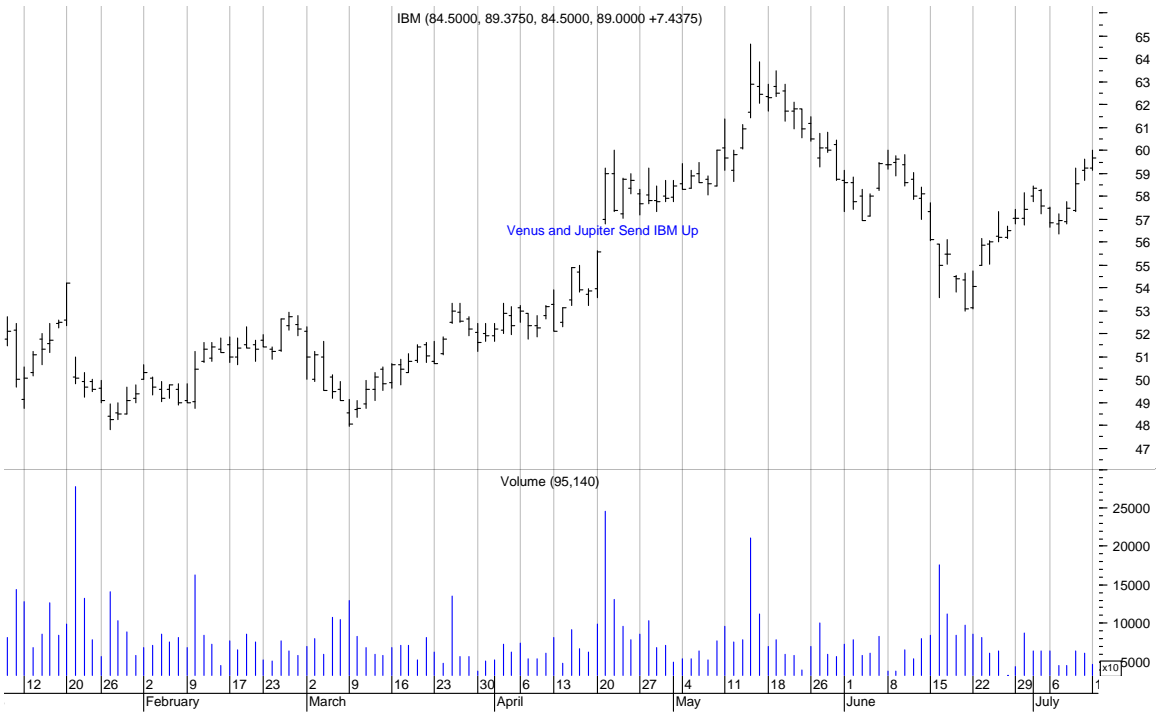
It is easy to see how activity at 16 to 22 mutable would affect all of the horoscopes. By working with horoscopes from the same industry, one will see how the stocks are tied together in this fashion. Actually, there are many about 30 to 40 tech horoscopes with planets at these degrees including Dell, Hewlett Compaq, Apple, Intuit, and Quantum to name a few.

In late March of 1997, I forecast a jump in these stocks in an article on the internet. Mars was making a station at 16 Virgo in April. This sent IBM up. In the next April (1998), Jupiter was in mid-Pisces, approaching the tech shared-degree area with Venus. IBM was giving daily and weekly technical buy signals. The combination of these signals and Jupiter activating the first-trade chart was an early warning of a run. The next two graphs depict the action.

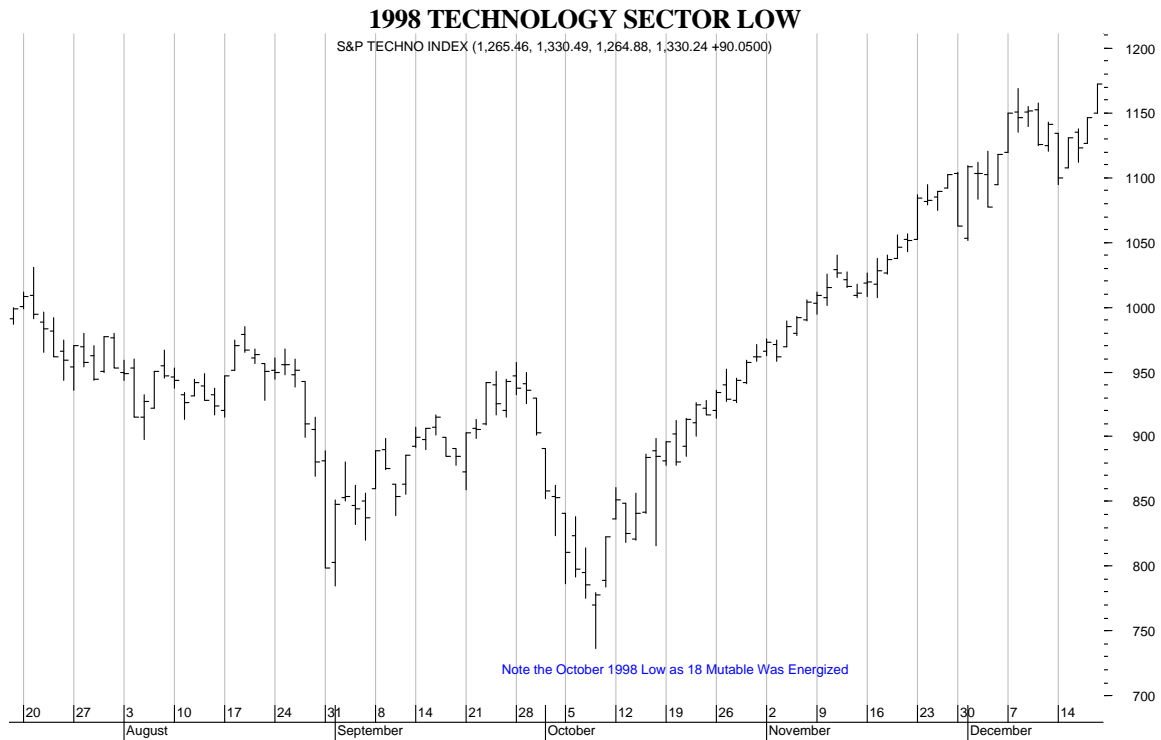
IBM ACTIVATION- 1997



IBM ACTIVATION- 1998



In November of 1998, Jupiter and Mercury stationed at 18 Pisces and 18 Sagittarius, respectively. This again activated the degree area, leading to an acceleration that propelled the tech sector into the number one spot for the entire year. Earnings reports came in way over estimates, as signalled by the stations of Mercury and Jupiter. Microsoft's (MSFT) earnings were up 75 per cent, quite a feat for a company of that size. I foresaw this low 6 months in advance, making the prediction in Dell Horoscope magazine in the October 1998 issue.



In late 2000, I looked ahead to Saturn's transit through 16 to 22 Gemini as being bearish for this group.

THIS IS A QUOTE FROM THE UAC 2008 LECTURE:

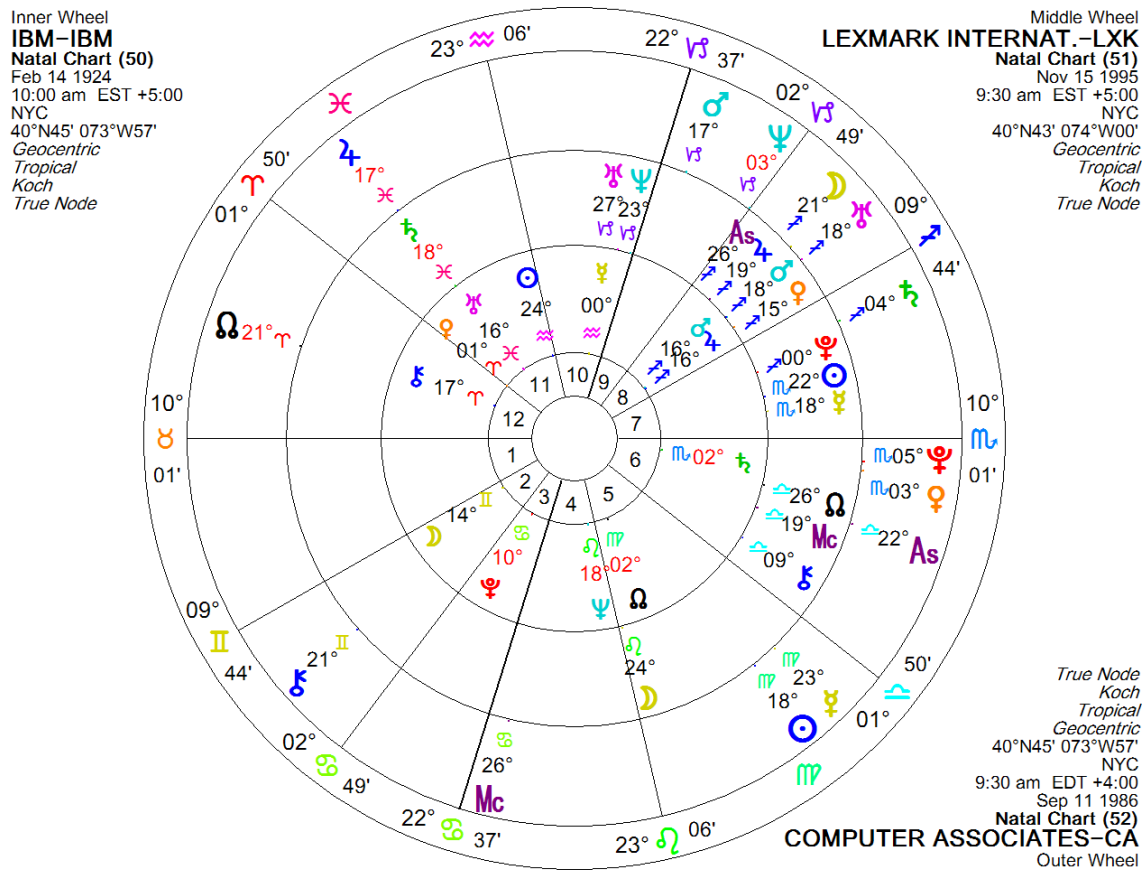
SCANNING FOR THE OCTOBER (2008) EPS REPORTING PERIOD

The major configurations are:

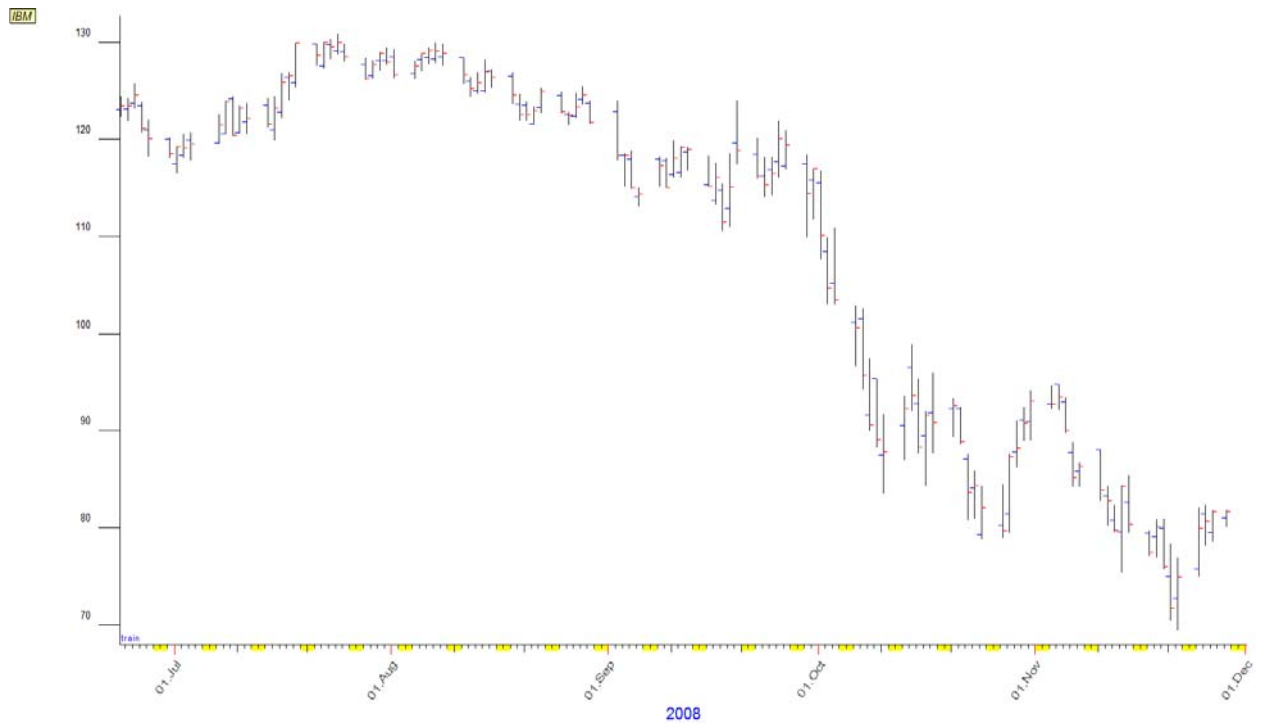
Nov. 21: Jupiter (20 Cap) trine Saturn (20 Virgo)

Nov. 4: Saturn (19 Virgo) 180 Uranus (19 Pisces)

Note that the entire tech sector will be afflicted by the Saturn-Uranus opposition.



Here was the effect on IBM:



4.-THE JUPITER METHOD OF STOCK SELECTION

From Planetary Stock Trading on page 83. Scan for horoscopes that have many planets and angles in the sign that Jupiter will transit for one year. There may be 3 or 4 or 5 such points. If there are too few stocks with 5 points, then reduce the scan to 4 points and so on.

PORTFOLIO	BUY DATE	SELL DATE	% CHANGE	NASDAQ
CANCER 3	7/28/89	8/17/90	-0.36	-4.42
LEO 3	8/17/90	9/12/91	+59.78	+39.08
VIRGO 4	9/12/91	10/9/92	+30.85	+3.53
LIBRA 4	10/9/92	11/10/93	+97.69	+33.01
SCORPIO 4	11/10/93	12/9/94	+12.63	-10.59
SAG. 4	12/30/93	12/28/95	+35.22	+26.58
CAP. 4	12/29/95	1/22/97	+7.68	+6.33
AQUARIUS 4	1/22/97	2/4/98	+14.41	+7.47

Jupiter enters Gemini on June 11.

The scan was opened up to include the 4 major asteroids. The Gemini scan showed:

- Many stocks with 3 planets in Gemini
- There were 24 with 4 planets and points in the sign of the twins
- 5 charts had 15 Gemini planets
- 4 horoscopes had 6 in Gemini.

Hewlett Compaq (HPQ- May 6, 2002) The chart has 4 planets, the Node and an asteroid in Gemini.

Phoenix Companies (PNX- June 20, 2001) There are 5 planets plus an asteroid in Gemini, including the Moon and the Sun. Also, the progressed Sun sextiles the MC during most of the year. Transiting Pluto trines the Taurus MC for most of the year.

Kraft Foods (KFT- June 13, 2001) manufactures and markets packaged food products worldwide. There are 4 planets plus an asteroid in Gemini. Neptune sextiles the MC all year.

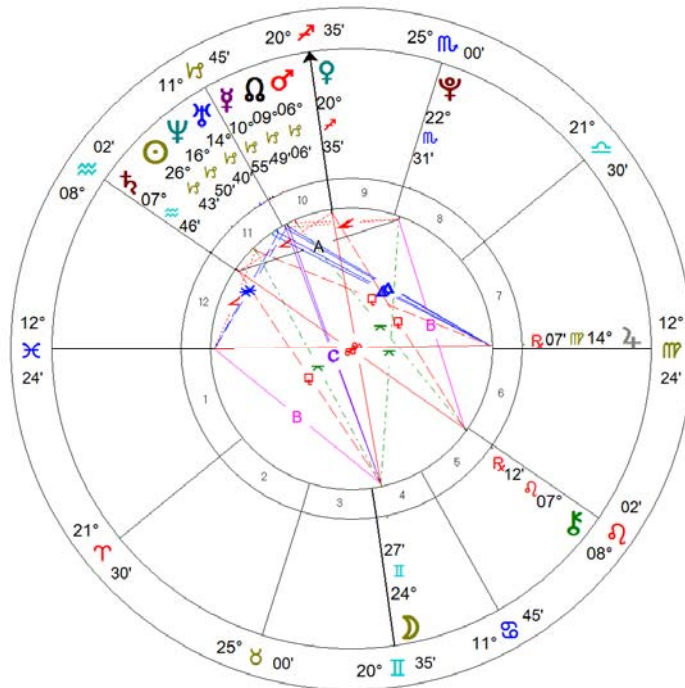
Furmanite Corporation (FRM- June 18, 2001) There are 4 planets and an asteroid in Gemini, including the Sun and Jupiter. The stock is likely to outperform over the next year.

Briggs and Stratton (BGG- July 5, 1929) Jupiter will pass right over the 1 Gemini, the same degree that was eclipsed on May 20th. Jupiter will conjoin natal Jupiter at 5 Gemini, followed by Mercury at 21 and the Moon at 24.

A FINAL NOTE

AMLN rose on buyout speculation in late March. The May 20th solar eclipse is 180 to the converse progressed MC. Jupiter will run right over this degree in the first half of June. There will likely be renewed speculation at that time.

AMYLIN PHARM.-AMLN
Natal Chart
Jan 17 1992, Fri
9:30 am EST +5:00
New York, New York
40°N42'51" 074°W00'23"
Geocentric
Tropical
Koch
True Node



AMYLIN PHARM.-AMLN
 Sec.Prog. SA in Long
 Converse
 Apr 5 2012, Thu
 8:02 pm EST +5:00
 New York, New York
 40°N42'51" 074°W00'23"
 Geocentric
 Tropical
 Koch
 True Node

